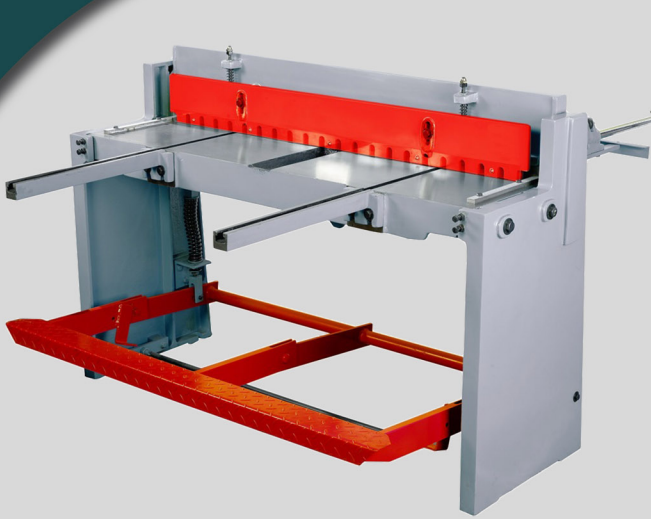


||| SHEETMETAL EQUIPMENT



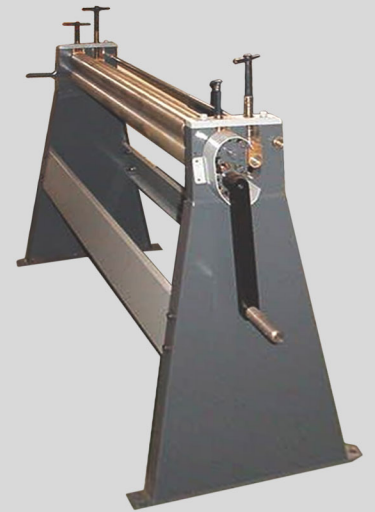
Treadle Guillotine:

- 1.6mm x 1250mm Blade
- Continuous Cutting



Box & Pan Folder:

- 1250mm x 1.6mm
- 2000mm x 1.6mm



Manual Pinch Plate Roller:

- 1.6mm x 1250mm



Jenny:

- 1.6mm Capacity x 230mm

From the side with 5 sets of wheels



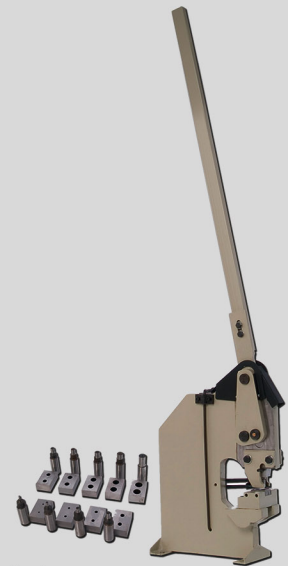
Hand Notcher:

- 100mm x 100mm x 3mm



Hand Shear:

- 4mm x 120mm Blade
- 4mm x 160mm Blade
- 4mm x 200mm Blade
- 4mm x 250mm Blade
- 4mm x 300mm Blade



Punching Unit:

- 110mm thru 6mm Plate Throat 80mm
- 12mm thru 8mm Plate Throat 120mm
- 16mm thru 10mm Plate Throat 160mm